



NEWCLIP
TECHNICS

S™
INITIAL
EVO
JONES FRACTURE

STERILE R

Ready
when you are!

With a non sterile standard kit



Calling on medical staff

Constraints > Complex traceability + Contracted out sterilization + Suppliers' deadline

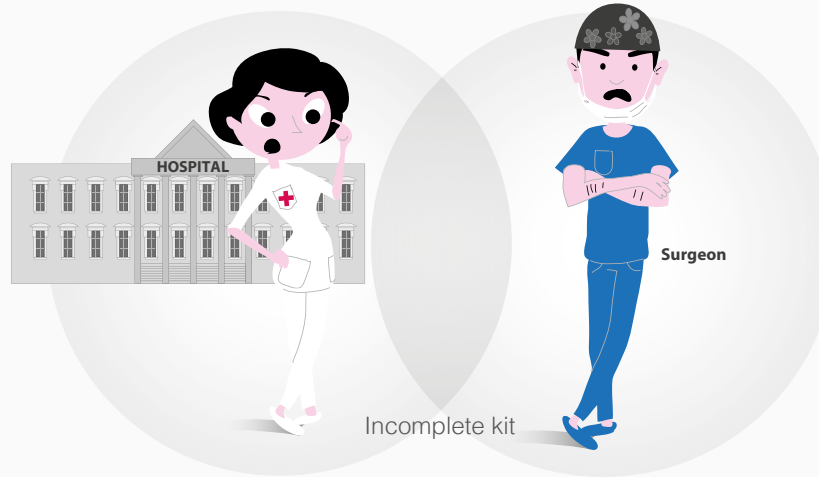
High costs



- \$ Stocks
- \$ Control
- \$ Cleaning
- \$ Decontamination
- \$ Sterilization



Bulky storage



Complex process



Prevents an effective solution & a quick response



Defective sterilization



Incomplete kit



Damaged instrumentation



INCREASED RISKS
NON OPTIMAL surgery



URGENT SURGICAL CASES COMPROMISED

With the



kit

Safety



TRACEABILITY
100%



Risk
of contamination

Cost efficiency



Controlled stocks
Simplified control

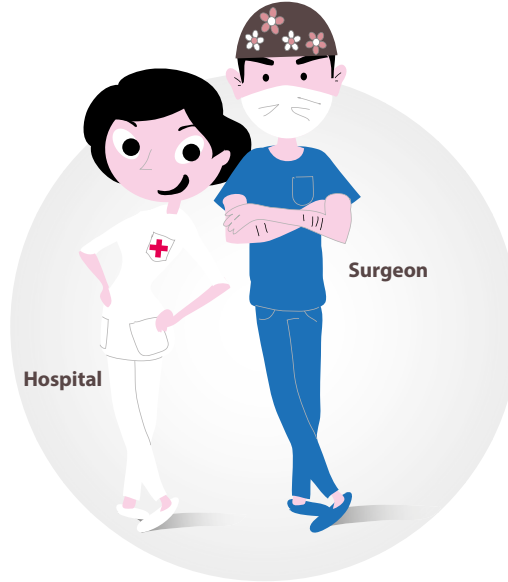
- 0 Cleaning
- 0 Decontamination
- 0 Sterilization



Sundry
expenses



Optimized storage



STERILE R SINGLE USE KIT
with state-of-the-art implants

Efficiency



- 1 Delivery
- 2 Storage
- 3 Surgery



An effective
solution &
a quick response



Available when needed



READY-TO-USE FOR
SURGERY

+ Optimized handling of
URGENT SURGICAL CASES

Ready
when you are!



Available when needed:

The Initial S™ EVO Jones Fracture kit comes pre-sterilized and ready to use.



Safety:

The Initial S™ EVO Jones Fracture kit is fully traceable and has a shelf life of 5 years. Its instrumentation is “always new” and has never been opened or used before.



Storage:

The Initial S™ EVO Jones Fracture kit can be easily stored in the operating room because of its small size.



Costs:

Initial S™ EVO Jones Fracture is a cost-effective solution. The additional costs including cleaning, decontamination, sterilization of kits are cancelled.



Contamination:

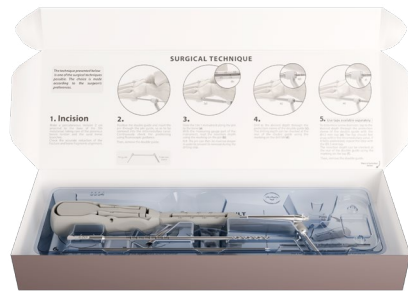
Sterile single-use instrumentation minimizes contamination risks.



Buying procedure:

Initial S™ EVO Jones Fracture facilitates buying procedures: restocking and orders are simplified, stock management is optimized.

Kit content

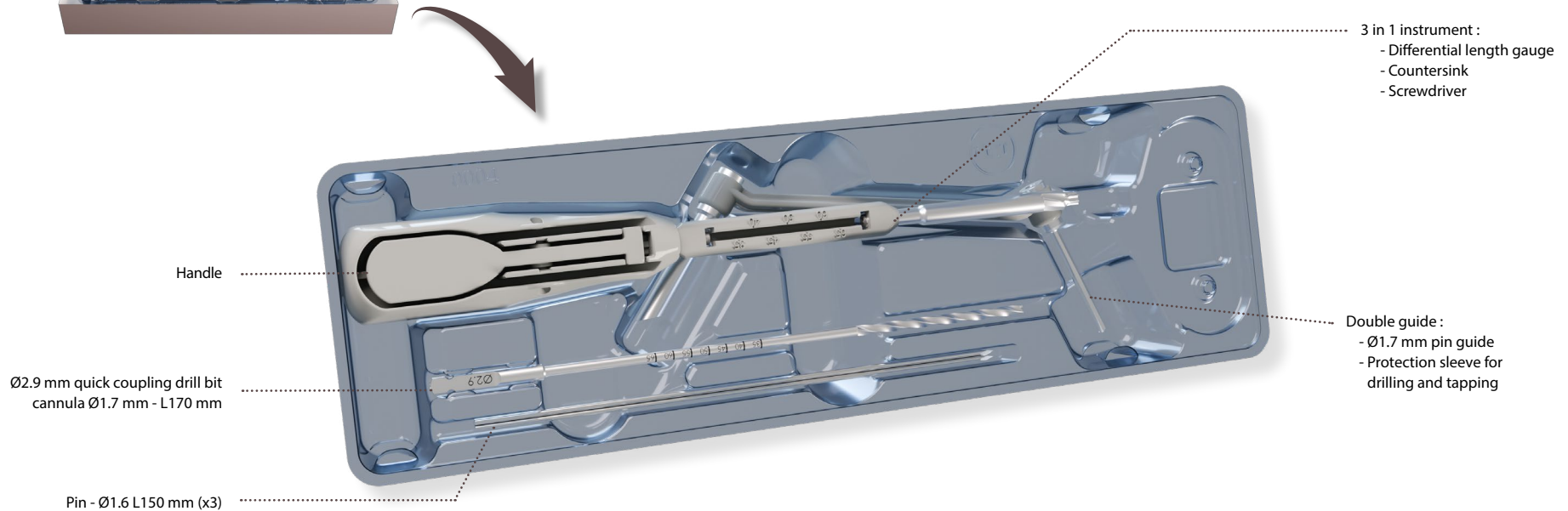


> Indication for use

The implants of the Foot and Hand Motion range are intended for the fixation of bone fractures and osteotomies and for arthrodeses of foot and hand in adults.

> Contraindications

- Pregnancy.
- Acute or chronic local or systemic infections.
- Allergy to one of the materials used or sensitivity to foreign bodies.



Taps - Available separately

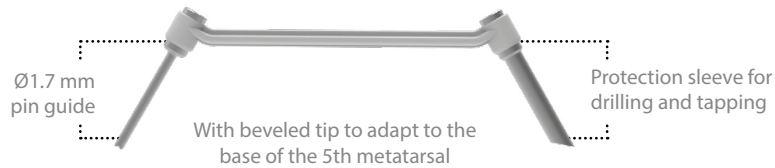


ANC1567-ST & ANC1568-ST

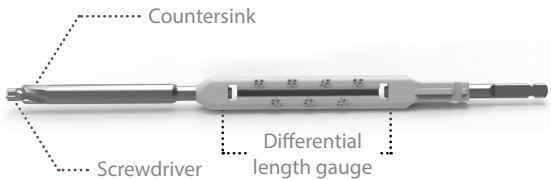
Technical features

> Single-use instrumentation

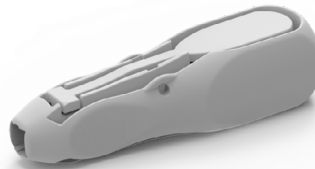
- Cannulated instrumentation to be guided through a Ø1.6 mm pin.
- Double guide to protect surrounding soft tissues.



- Patented 3 in 1 instrument for a simple use: differential length gauge, countersink and screwdriver.



- This 3 in 1 instrument can be either used with the handle in the kit or can be attached to a power tool.



- > Three ways to measure screw length: differential length gauge associated to the pin; drill bit associated to the double guide; tap associated to the double guide.

> Associated sterile taps

- The taps help in determination of the correct diameter of the screw to be used when the anchorage of the medullary canal is satisfying.

CORRESPONDING TABLE



- The taps are to be used with the handle.

WARNING : Ø4.5 mm & Ø5.5 mm sterile taps are provided apart from the set.

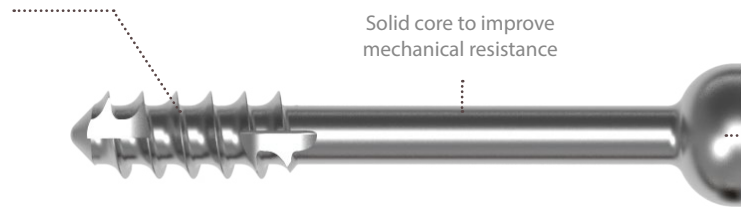
Technical features

> Associated single-use screws

- Range of $\varnothing 4.5$ mm and $\varnothing 5.5$ mm compressive screws
Length from 35 to 65 mm (5 mm incrementation)
- Material: Titanium alloy
- Available separately in sterile version.



Partial thread corresponding to
1/3 of the total length



Solid core to improve
mechanical resistance

Low-profile head to avoid
prominence and cuboid
impingement

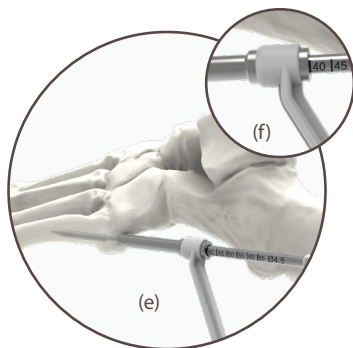
Surgical technique

The technique presented on this page is one of the surgical techniques possible. The choice is made according to the surgeon's preferences.

1. Incision

Make a percutaneous incision 2 cm proximal to the base of the 5th metatarsal, taking care of the peroneus brevis tendon and the sural nerve branches.

Check the accurate reduction of the fracture and bone fragments alignment.



5. Use taps available separately.

To determine screw diameter, tap to the desired depth through the protection sleeve of the double guide with the $\varnothing 4.5$ mm tap (e). The tap should feel snug within the intramedullary canal. If it feels undersized, repeat the step with the $\varnothing 5.5$ mm tap.

The insertion depth can be checked at the rear of the double guide using the marking on the tap (f).

Then, remove the double guide.

2. Position the double guide and insert the pin through the pin guide, so as to be centered into the intramedullary canal. Continuously check the positioning using fluoroscopic guidance. Then, remove the double guide.



6. Widen the first cortex using the countersink part of the 3 in 1 instrument. Then, remove the pin.



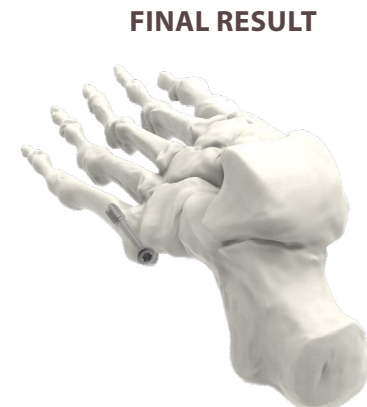
3. Slide the 3 in 1 instrument along the pin to the bone (a).

With the measuring gauge part of the instrument, read the insertion depth using the marking on the pin (b).

N.B. The pin can then be inserted deeper in order to prevent its removal during the drilling step.

7. Select the appropriate screw diameter according to the last tap used in step 5, and the appropriate screw length. Insert the screw using the screwdriver part of the 3 in 1 instrument until the desired reduction and compression are achieved.

4. Drill to the desired depth through the protection sleeve of the double guide (c). The drilling depth can be checked at the rear of the double guide using the marking on the drill bit (d).



References

Initial S™ EVO Jones Fracture kit

INITIAL S™ EVO JONES FRACTURE KIT - INSTRUMENTATION CONTENT

Ref.	Description	Content	Qty
KIT-SCM4.5-5.5F	Instrumentation kit for Ø4.5 mm and Ø5.5 mm compressive screws	3 in 1 instrument for Ø4.5 mm & Ø5.5 mm screws	1
		5.8 mm single use handle	1
		Ø2.9 mm quick coupling drill bit - cannula Ø1.7 mm - L170 mm	1
		Double guide Ø1.7 mm / Ø5.2 mm	1
		Pin Ø1.6 L150 mm	3



Taps

Sterile instruments available separately.

ASSOCIATED TAPS

Ref.	Description
ANC1567-ST	Tap for Ø4.5 mm screws - STERILE
ANC1568-ST	Tap for Ø5.5 mm screws - STERILE



Implants

Ø4.5 mm & Ø5.5 mm screws available separately in sterile version (S-box).

Ø4.5 MM COMPRESSIVE SCREWS

Ref.	Description
MT4.5L35D-ST	Ø4.5 mm compressive screw - Partially threaded - L 35 mm - STERILE
MT4.5L40D-ST	Ø4.5 mm compressive screw - Partially threaded - L 40 mm - STERILE
MT4.5L45D-ST	Ø4.5 mm compressive screw - Partially threaded - L 45 mm - STERILE
MT4.5L50D-ST	Ø4.5 mm compressive screw - Partially threaded - L 50 mm - STERILE
MT4.5L55D-ST	Ø4.5 mm compressive screw - Partially threaded - L 55 mm - STERILE
MT4.5L60D-ST	Ø4.5 mm compressive screw - Partially threaded - L 60 mm - STERILE
MT4.5L65D-ST	Ø4.5 mm compressive screw - Partially threaded - L 65 mm - STERILE



Ø5.5 MM COMPRESSIVE SCREWS

Ref.	Description
MT5.5L35D-ST	Ø5.5 mm compressive screw - Partially threaded - L 35 mm - STERILE
MT5.5L40D-ST	Ø5.5 mm compressive screw - Partially threaded - L 40 mm - STERILE
MT5.5L45D-ST	Ø5.5 mm compressive screw - Partially threaded - L 45 mm - STERILE
MT5.5L50D-ST	Ø5.5 mm compressive screw - Partially threaded - L 50 mm - STERILE
MT5.5L55D-ST	Ø5.5 mm compressive screw - Partially threaded - L 55 mm - STERILE
MT5.5L60D-ST	Ø5.5 mm compressive screw - Partially threaded - L 60 mm - STERILE
MT5.5L65D-ST	Ø5.5 mm compressive screw - Partially threaded - L 65 mm - STERILE



References

Removal kit

Sterile instruments available separately.

REMOVAL KIT			
Ref.	Description	Content	Qty
KIT-REMOVE-8	Removal kit for T20 hexalobe	T20 screwdriver	1



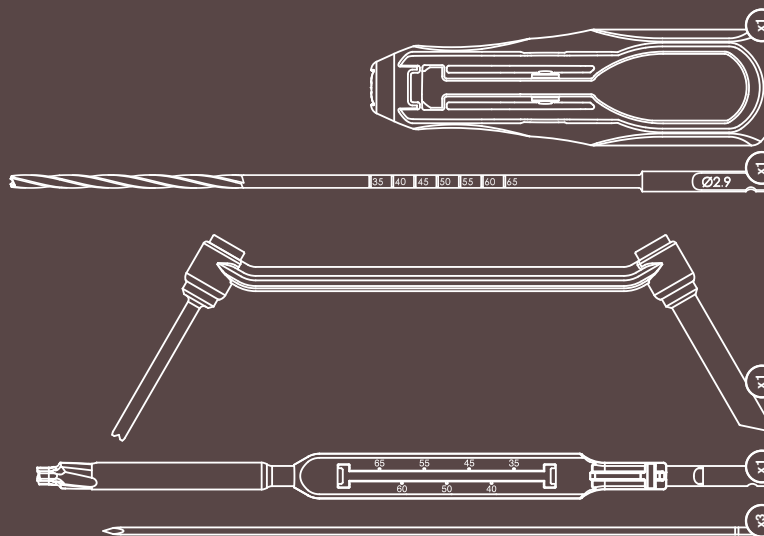
Ready
when you are!

This information is intended to demonstrate the Newclip Technics portfolio of medical devices. Always refer to the package insert, product label and/or user instructions before using any Newclip Technics product. These products must be handled and/or implanted by trained and qualified staff who have read the instructions before use. A surgeon must always rely on her or his own professional clinical judgment when deciding whether to use a particular product when treating a particular patient. Product availability is subject to the regulatory or medical practices that govern individual markets. Please contact your Newclip Technics representative if you have questions about the availability of Newclip Technics products in your area.

KIT-SCM4.5-5.5F

Instrumentation kit for Ø4.5 mm & Ø 5.5 mm
Jones fracture screws

MADE IN FRANCE



Non contractual pictures.

ANC1567-ST & ANC1568-ST



Ø4.5 mm & Ø5.5 mm sterile taps are provided apart from the set



NEWCLIP TECHNICS (HQ)

45 rue des Garotières
44115 Haute Goulaine, France
+33 (0)2 28 21 23 25
orders@newcliptechnics.com
www.newcliptechnics.com

NEWCLIP TECHNICS USA

Newclip USA LLC
340 Tesconi Circle, Suite A
Santa Rosa CA 95401 USA
+1 707 230 5078
customerservice@newclipusa.com
www.newcliptechnics.com

NEWCLIP TECHNICS IBERIA

Calle Frederic Mompou 4b
Sant Just Desvern
08960 Barcelona, España
+34 938 299 526
contact@newclipiberia.com
www.newcliptechnics.com

NEWCLIP TECHNICS GERMANY

Newclip GmbH
Pröllstraße 11
D-86157 Augsburg, Deutschland
+49 (0)821 650 749 40
info@newclipgmbh.com
www.newcliptechnics.com

NEWCLIP TECHNICS AUSTRALIA

Newclip Australia
3B/11 Donkin Street
West End 4101, Australia
+61 (0)2 81 886 110
solutions@newclipaustralia.com
www.newcliptechnics.com

NEWCLIP TECHNICS BELGIUM

Newclip Belgium
Detbystraat 43
9051 Sint-Denijs-Westrem
+32 (0)9 2311331
contact@newclipbelgium.com
www.newcliptechnics.com



Manufacturer: Newclip Technics - Brochure US - Initial S EVO Jones Fracture - Ed.2 - 04/2025 - Medical devices: US class II.
Read labelling and instructions before the use of Newclip Technics medical devices. These products must be handled and/or implanted by trained and qualified staff who have read the instructions before use.